



Lucy Weiser

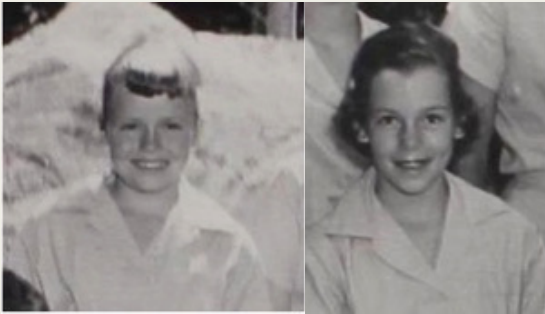


Jessie Pond



Constance Dowd

Fuller-Nicholson-Thielscher



1957

Betsy and Cathy Fuller traveled from Westfield, MA to start a family tradition at Runoia that spans seven decades. Cathy remembers camp as a place where she and Betsy could be more than sisters; they could be friends. Eight summers at Runoia had a profound role in shaping who she is. Cathy credits camp for an important sense of self-worth and caring for others, and very special friends. For the last seven years, she has shared her love and value for the camp experience by volunteering at a bereavement camp for children outside Boston.



1984

Cathy's daughter, Betsy Nicholson, spent five carefree summers at Runoia in the 1980s. Runoia, she says, taught her how to depend on herself, *and* how to depend on and trust in others. Camp also gave her a love for the out-of-doors, which eventually became the focus of her career.



2019

Betsy's Runoia cohort remains friends to this day. And they are all alumnae daughters! Pictured here at a recent alumnae gathering are Krissy Auns Oliver, Betsy, Melissa Gary Gabriel, and Cathy Prodo Hamm.



2018

"Oh here we come..." back to Runoia for another generation of memories! Betsy's daughter Sayles is the newest Runoia girl in the family, having started camp in iHarmonyland in 2018, returning as a first shacker in 2019.